

CD68 Mouse Monoclonal Antibody(12E2)

Catalog No: RA10011

Basic Information

Host species	Mouse
Applications	IHC
Species Cross-Reactivity	H, R, M
Specificity	The CD68 antibody can detects endogenous CD68 protein.
Recommended dilutions	IHC: 1:200-500 Optimal dilutions should be determined by the end user.

Applications

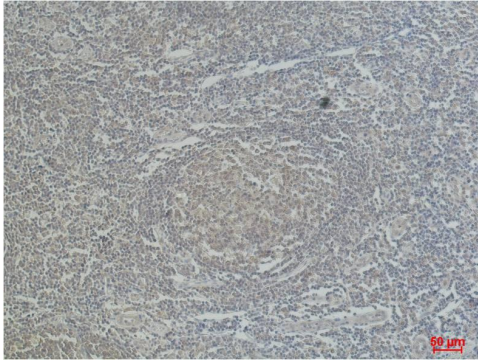
Formulation	PBS, pH 7.4, containing 0.02% sodium azide as Preservative and 50% Glycerol.
Storage	Store at -20°C. Avoid repeated freeze-thaw cycles.
Concentration	1 mg/ml
Clonality	Monoclonal

Background

Alternative Names	CD68 antigen antibody, Macrophage antigen CD68 (microsialin) antibody, GP110 antibody
Observed band	N/A
Human Gene ID	968
Human Swiss-Prot Number	P34810

The CD68 antigen is a 37kD transmembrane protein that is post-translationally glycosylated to give a protein of 87-115kD. CD68 is specifically expressed by tissue macrophages, Langerhans cells and at low levels by dendritic cells. It could play a role in phagocytic activities of tissue macrophages, both in intracellular lysosomal metabolism and extracellular cell-cell and cell-pathogen interactions. It binds to tissue- and organ-specific lectins or selectins, allowing homing of macrophage subsets to particular sites. Rapid recirculation of CD68 from endosomes and lysosomes to the plasma membrane may allow macrophages to crawl over selectin bearing substrates or other cells.

Selected Validation Data



Immunohistochemical analysis of paraffin-embedded Human Tonsil Tissue using CD68 Mouse mAb diluted at 1:500.