

α -Smooth Muscle Actin Mouse Monoclonal Antibody(6A12)

Catalog No: RA10017

Basic Information

Host species	Mouse
Applications	WB, IHC
Species Cross-Reactivity	H, R, M
Specificity	The α -Smooth Muscle Actin antibody can detects endogenous α -Smooth Muscle Actin protein.
Recommended dilutions	WB: 1:10,000-100,000 IHC:1:1,000-2,000 Optimal dilutions should be determined by the end user.

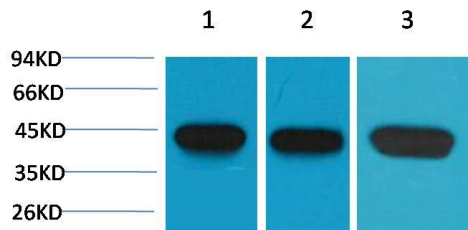
Applications

Formulation	PBS, pH 7.4, containing 0.02% sodium azide as Preservative and 50% Glycerol.
Storage	Store at -20°C. Avoid repeated freeze-thaw cycles.
Concentration	1 mg/ml
Clonality	Monoclonal

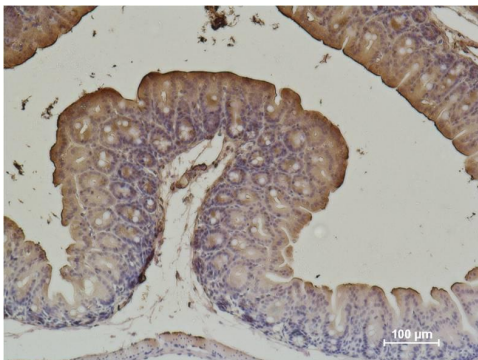
Background

Alternative Names	AAT6 antibody, ACTA2 antibody, alpha actin 2 antibody, GIG46 antibody, ACTSA antibody, ACTVS antibody
Observed band	42
Human Gene ID	59
Human Swiss-Prot Number	P62736
Background	Actin is a globular multi-functional protein that forms microfilaments. ACTA2 codes for an α -actin located in the smooth muscle, and also in vascular smooth muscle.

Selected Validation Data



Western blot analysis of 1) Hela, 2)3T3, 3)Rat Brain with α -Smooth Muscle Actin Mouse mAb diluted at 1:1,000,000.



Immunohistochemical analysis of paraffin-embedded Mouse Cecal Tissue using α -Smooth Muscle Actin Mouse mAb diluted at 1:500.