

CREB Mouse Monoclonal Antibody(4B4)

Catalog No: RA10024

Basic Information

Host species	Mouse
Applications	WB, IHC
Species Cross-Reactivity	H, M
Specificity	The CREB antibody can detects endogenous CREB protein.
Recommended dilutions	WB: 1:500-1,000 IHC: 1:100-200 Optimal dilutions should be determined by the end user.

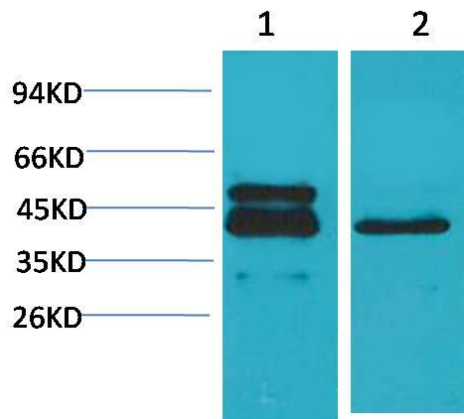
Applications

Formulation	PBS, pH 7.4, containing 0.02% sodium azide as Preservative and 50% Glycerol.
Storage	Store at -20°C. Avoid repeated freeze-thaw cycles.
Concentration	1 mg/ml
Clonality	Monoclonal

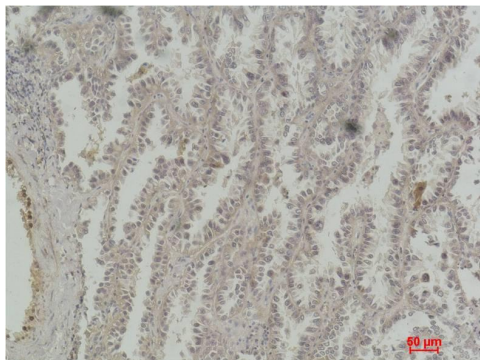
Background

Alternative Names	Cyclic AMP-responsive element binding protein 1 antibody, MGC9284 antibody, CREB1 antibody
Observed band	43
Human Gene ID	1385
Human Swiss-Prot Number	P16220
Background	CREB (cAMP response element-binding protein) is a cellular transcription factor. This protein binds the cAMP response element (CRE), a sequence present in many viral and cellular promoters. CREB is closely related in structure and function to CREM (cAMP response element modulator) and ATF-1 (activating transcription factor-1) proteins. CREB proteins are expressed in many animals.

Selected Validation Data



Western blot analysis of 1) A431, 2)3T3 with CREB Mouse mAb diluted at 1:2,000.



Immunohistochemical analysis of paraffin-embedded Human Lung Carcinoma using CREB Mouse mAb diluted at 1:200.