

IL-8 Mouse Monoclonal Antibody(13F8)

Catalog No: RA10099

Basic Information

| | |
|--------------------------|---|
| Host species | Mouse |
| Applications | IHC |
| Species Cross-Reactivity | H,R,M |
| Specificity | The IL-8 antibody can detects endogenous IL-8 protein. |
| Recommended dilutions | IHC: 1:100-200 Optimal dilutions should be determined by the end user. |

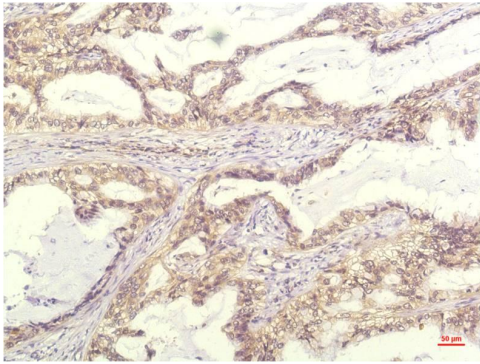
Applications

| | |
|---------------|--|
| Formulation | PBS, pH 7.4, containing 0.02% sodium azide as Preservative and 50% Glycerol. |
| Storage | Store at -20°C. Avoid repeated freeze-thaw cycles. |
| Concentration | 1 mg/ml |
| Clonality | Monoclonal |

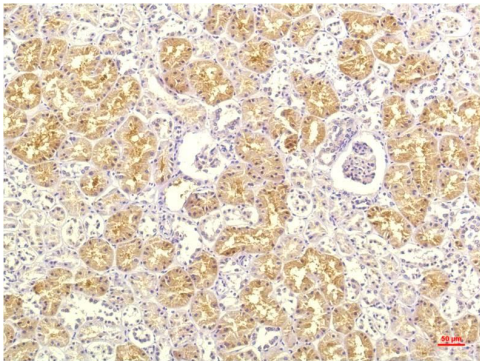
Background

| | |
|-------------------------|--|
| Alternative Names | 9E3,CXCL8,CEF-4,GCP-1,Granulocyte chemotactic protein 1 |
| Observed band | 11 |
| Human Gene ID | 3576 |
| Human Swiss-Prot Number | P10145 |
| Background | IL-8 is a chemotactic factor that attracts neutrophils, basophils, and T-cells, but not monocytes. It is also involved in neutrophil activation. It is released from several cell types in response to an inflammatory stimulus. |

Selected Validation Data



Immunohistochemical analysis of paraffin-embedded Human Lung Carcinoma Tissue using IL-8 Mouse mAb diluted at 1:200.



Immunohistochemical analysis of paraffin-embedded Human Kidney Tissue using IL-8 Mouse mAb diluted at 1:200.