

LC3A Mouse Monoclonal Antibody(5G10)

Catalog No: RA10135

Basic Information

Host species	Mouse
Applications	WB,IHC
Species Cross-Reactivity	H,R,M
Specificity	Antibody can detects endogenous LC3A protein.
Recommended dilutions	WB:1:1,000-2,000 IHC: 1:100-200 Optimal dilutions should be determined by the end user.

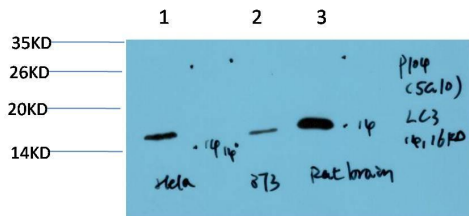
Applications

Formulation	PBS, pH 7.4, containing 0.02% sodium azide as Preservative and 50% Glycerol.
Storage	Store at -20°C. Avoid repeated freeze-thaw cycles.
Concentration	1 mg/ml
Clonality	Monoclonal

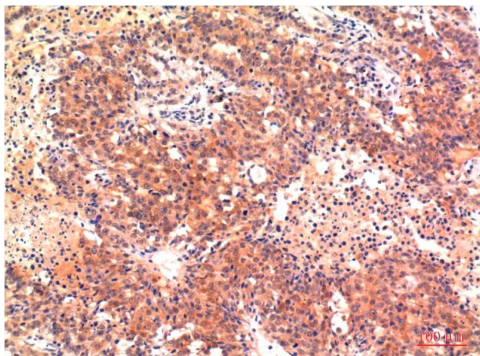
Background

Alternative Names	ATG8E, MAP1LC3A,autophagy-related protein LC3A
Observed band	14,16
Human Gene ID	84557
Human Swiss-Prot Number	Q9H492
Background	Three human LC3 isoforms (LC3A, LC3B, and LC3C) undergo post-translational modifications during autophagy. Cleavage of LC3 at the carboxy terminus immediately following synthesis yields the cytosolic LC3-I form.

Selected Validation Data



Western blot analysis of 1) HeLa Cell Lysate, 2) 3T3 Cell Lysate, 3) Rat Brain Tissue Lysate using LC3A Mouse mAb diluted at 1:1000.



Immunohistochemical analysis of paraffin-embedded Human Hepatocarcinoma Tissue using LC3A Mouse mAb diluted at 1:200.