

# Gamma Tubulin Mouse Monoclonal Antibody(7B1)

## Catalog No: RA10138

### Basic Information

Host species	Mouse
Applications	WB,IHC
Species Cross-Reactivity	H,R,M
Specificity	The gamma tubulin antibody can detects endogenous gamma tubulin protein.
Recommended dilutions	WB: 1:1,000-2,000    IHC: 1:100-200 Optimal dilutions should be determined by the end user.

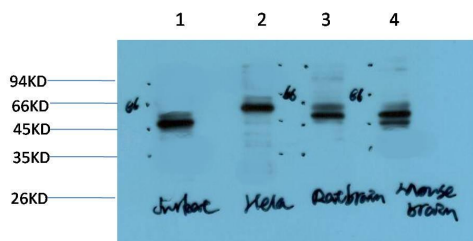
### Applications

Formulation	PBS, pH 7.4, containing 0.02% sodium azide as Preservative and 50% Glycerol.
Storage	Store at -20°C. Avoid repeated freeze-thaw cycles.
Concentration	1 mg/ml
Clonality	Monoclonal

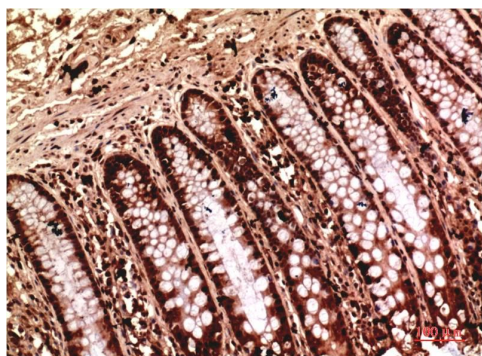
### Background

Alternative Names	$\gamma$ tubulin, GCP1, TUBG2
Observed band	50
Human Gene ID	7283
Human Swiss-Prot Number	P23258
Background	$\gamma$ -tubulin forms complexes of two different sizes: $\gamma$ -tubulin small complex ( $\gamma$ -TuSC) and the larger $\gamma$ -tubulin ring complex ( $\gamma$ -TuRC).

## Selected Validation Data



Western blot analysis of 1) Jurkat Cell Lysate, 2) HeLa Cell Lysate, 3) Rat Brain Tissue Lysate, 4) Mouse Brain Tissue Lysate using Gamma Tubulin Mouse mAb diluted at 1:2000.



Immunohistochemical analysis of paraffin-embedded Human Colon Carcinoma Tissue using Gamma Tubulin Mouse mAb diluted at 1:200.