

Gamma Tubulin Mouse Monoclonal Antibody(6C12)

Catalog No: RA10139

Basic Information

| | |
|--------------------------|--|
| Host species | Mouse |
| Applications | WB,IHC |
| Species Cross-Reactivity | H,R,M |
| Specificity | The gamma tubulin antibody can detects endogenous gamma tubulin protein. |
| Recommended dilutions | WB: 1:1,000-2,000 IHC: 1:100-200 Optimal dilutions should be determined by the end user. |

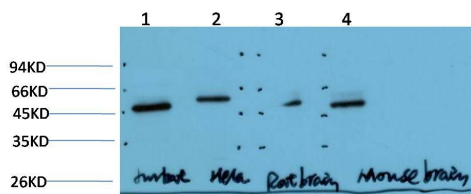
Applications

| | |
|---------------|--|
| Formulation | PBS, pH 7.4, containing 0.02% sodium azide as Preservative and 50% Glycerol. |
| Storage | Store at -20°C. Avoid repeated freeze-thaw cycles. |
| Concentration | 1 mg/ml |
| Clonality | Monoclonal |

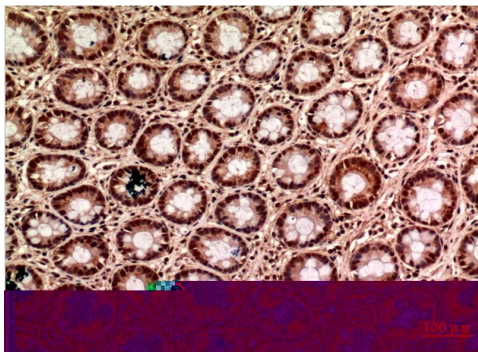
Background

| | |
|-------------------------|--|
| Alternative Names | γ tubulin, GCP1, TUBG2 |
| Observed band | 50 |
| Human Gene ID | 7283 |
| Human Swiss-Prot Number | P23258 |
| Background | γ -tubulin forms complexes of two different sizes: γ -tubulin small complex (γ -TuSC) and the larger γ -tubulin ring complex (γ -TuRC). |

Selected Validation Data



Western blot analysis of 1) Jurkat Cell Lysate, 2) HeLa Cell Lysate, 3) Rat Brain Tissue Lysate, 4) Mouse Brain Tissue Lysate using Gamma Tubulin Mouse mAb diluted at 1:2000.



Immunohistochemical analysis of paraffin-embedded Human Colon Carcinoma Tissue using Gamma Tubulin Mouse mAb diluted at 1:200.