

Beclin-1 Mouse Monoclonal Antibody(5C2)

Catalog No: RA10141

Basic Information

Host species	Mouse
Applications	WB,IHC
Species Cross-Reactivity	H,R,M
Specificity	Antibody can detects endogenous Beclin-1 protein.
Recommended dilutions	WB: 1:1,000-2,000 IHC: 1:100-200 Optimal dilutions should be determined by the end user.

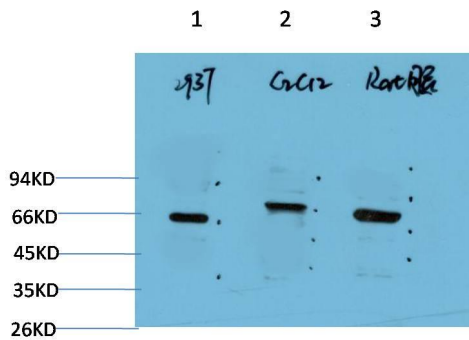
Applications

Formulation	PBS, pH 7.4, containing 0.02% sodium azide as Preservative and 50% Glycerol.
Storage	Store at -20°C. Avoid repeated freeze-thaw cycles.
Concentration	1 mg/ml
Clonality	Monoclonal

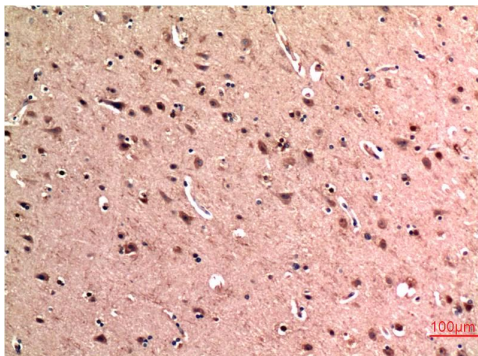
Background

Alternative Names	ATG6, Bcl-2 interacting protein beclin, BECN1, Coiled coil myosin like BCL2 interacting protein
Observed band	60
Human Gene ID	8678
Human Swiss-Prot Number	Q14457
Background	Autophagy is a catabolic process for the autophagosomic-lysosomal degradation of proteins activated in response to nutrient deprivation and in neurodegenerative conditions. One of the proteins critical to this process is Beclin-1.

Selected Validation Data



Western blot analysis of 1) 293T Cell Lysate, 2) C2C12 Cell Lysate, 3) Rat Brain Tissue Lysate using Beclin-1 Mouse mAb diluted at 1:2000.



Immunohistochemical analysis of paraffin-embedded Human Brain Tissue using Beclin-1 Mouse mAb diluted at 1:200.