

MMP2 Mouse Monoclonal Antibody(1H1)

Catalog No: RA10153

Basic Information

Host species	Mouse
Applications	IHC
Species Cross-Reactivity	H, R, M
Specificity	Antibody can detects endogenous MMP2 protein.
Recommended dilutions	IHC: 1:200-500 Optimal dilutions should be determined by the end user.

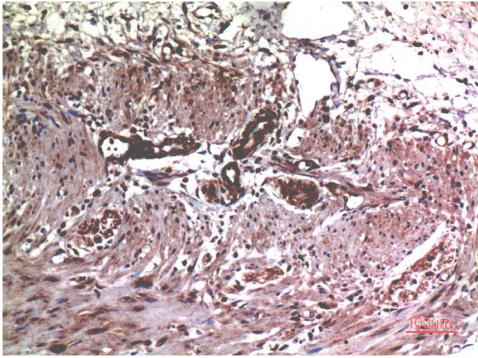
Applications

Formulation	PBS, pH 7.4, containing 0.02% sodium azide as Preservative and 50% Glycerol.
Storage	Store at -20°C. Avoid repeated freeze-thaw cycles.
Concentration	1 mg/ml
Clonality	Monoclonal

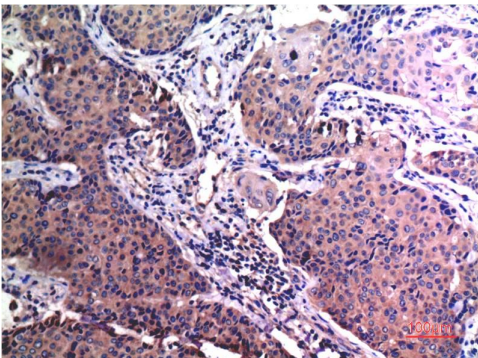
Background

Alternative Names	matrix metalloproteinase 2, MONA, gelatinase A
Observed band	64, 72
Human Gene ID	4313
Human Swiss-Prot Number	P08253
Background	The matrix metalloproteinases (MMPs) are a family of proteases that target many extracellular proteins including other proteases, growth factors, cell surface receptors, and adhesion molecules.

Selected Validation Data



Immunohistochemical analysis of paraffin-embedded Human Colon Carcinoma Tissue using MMP2 Mouse mAb diluted at 1:200.



Immunohistochemical analysis of paraffin-embedded Human Breast Carcinoma Tissue using MMP2 Mouse mAb diluted at 1:200.