

ATM Mouse Monoclonal Antibody(1D1)

Catalog No: RA10168

Basic Information

| | |
|--------------------------|---|
| Host species | Mouse |
| Applications | IHC |
| Species Cross-Reactivity | H,R,M |
| Specificity | The antibody can detects endogenous ATM proteins. |
| Recommended dilutions | IHC: 1:100-200 Optimal dilutions should be determined by the end user. |

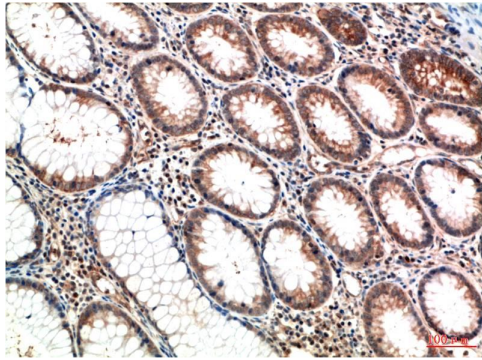
Applications

| | |
|---------------|--|
| Formulation | PBS, pH 7.4, containing 0.02% sodium azide as Preservative and 50% Glycerol. |
| Storage | Store at -20°C. Avoid repeated freeze-thaw cycles. |
| Concentration | 1 mg/ml |
| Clonality | Monoclonal |

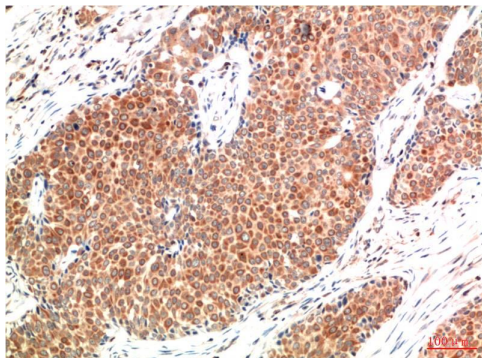
Background

| | |
|-------------------------|---|
| Alternative Names | AT1,ATA,ATDC,TEL1,A-T mutated antibody |
| Observed band | 350 |
| Human Gene ID | 472 |
| Human Swiss-Prot Number | Q13315 |
| Background | Ataxia telangiectasia mutated kinase (ATM) is a serine/threonine kinase that regulates cell cycle checkpoints and DNA repair. ATM kinase regulates a number of proteins involved in cell cycle checkpoint control, apoptosis, and DNA repair. |

Selected Validation Data



Immunohistochemical analysis of paraffin-embedded Human Colon Carcinoma Tissue using ATM Mouse mAb diluted at 1:200.



Immunohistochemical analysis of paraffin-embedded Human Breast Carcinoma Tissue using ATM Mouse mAb diluted at 1:200.