

# HP-1 $\alpha$ Mouse Monoclonal Antibody(5E3)

## Catalog No: RA10202

### Basic Information

Host species	Mouse
Applications	WB,IHC
Species Cross-Reactivity	H,R,M
Specificity	Antibody can detects endogenous HP-1 $\alpha$ proteins.
Recommended dilutions	WB: 1:500-1,000      IHC: 1:100-200 Optimal dilutions should be determined by the end user.

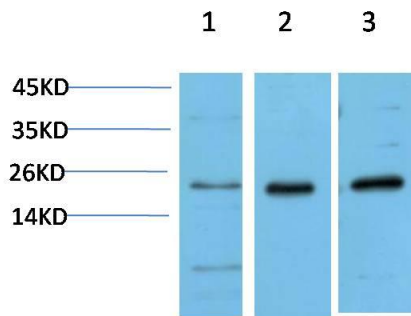
### Applications

Formulation	PBS, pH 7.4, containing 0.02% sodium azide as Preservative and 50% Glycerol.
Storage	Store at -20°C. Avoid repeated freeze-thaw cycles.
Concentration	1 mg/ml
Clonality	Monoclonal

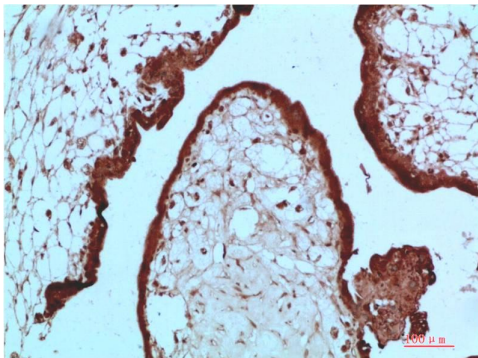
### Background

Alternative Names	Antigen p25, CBX5, HEL25, Heterochromatin protein 1
Observed band	22
Human Gene ID	23468
Human Swiss-Prot Number	P45973
Background	Heterochromatin protein 1 (HP1) is a family of heterochromatic adaptor molecules involved in both gene silencing and higher order chromatin structure. All three HP1 family members ( $\alpha$ , $\beta$ , and $\gamma$ ) are primarily associated with centromeric heterochromatin.

## Selected Validation Data



Western blot analysis of 1) Hela Cell Lysate, 2)3T3 Cell Lysate, 3) PC12 Cell Lysate using HP-1 $\alpha$  Mouse mAb diluted at 1:1000.



Immunohistochemical analysis of paraffin-embedded Human Placenta Tissue using HP-1  $\alpha$  Mouse mAb diluted at 1:200