

c-Jun Rabbit Polyclonal Antibody(F128)

Catalog No: RA20275

Basic Information

Host species	Rabbit
Applications	WB, IHC
Species Cross-Reactivity	H, M
Specificity	Antibody can detects endogenous c-Jun proteins.
Recommended dilutions	WB: 1:1,000-2,000 IHC: 1:100-200 Optimal dilutions should be determined by the end user.

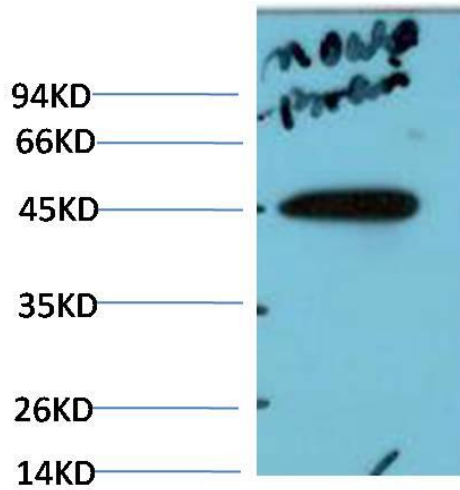
Applications

Formulation	Antigen Affinity Purified IgG in PBS, pH 7.4, containing 0.02% sodium azide as Preservative and 50% Glycerol.
Storage	Store at -20°C. Avoid repeated freeze-thaw cycles.
Concentration	1 mg/ml
Clonality	Polyclonal

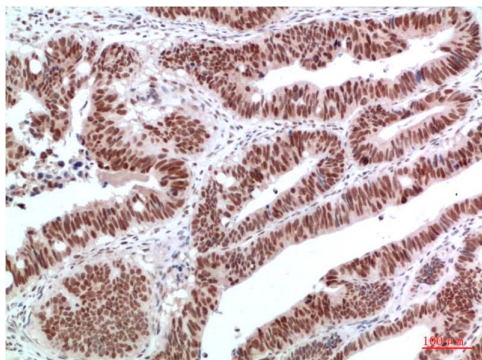
Background

Alternative Names	Activator Protein 1 antibody, AP1 antibody, p39 antibody
Observed band	43
Human Gene ID	3725
Human Swiss-Prot Number	P05427
Background	c-Jun is a member of the Jun Family containing c-Jun, JunB and JunD, and is a component of the transcription factor AP-1 (activator protein-1).

Selected Validation Data



Western blot analysis of Mouse Brain Tissue Lysate using c-Jun Rabbit pAb diluted at 1:2000.



Immunohistochemical analysis of paraffin-embedded Human Colon Carcinoma Tissue using c-Jun Rabbit pAb diluted at 1:200