

HSP40 Rabbit Polyclonal Antibody(F158)

Catalog No: RA20283

Basic Information

Host species	Rabbit
Applications	WB, IHC
Species Cross-Reactivity	H, R, M
Specificity	The Antibody can detects endogenous HSP40 proteins.
Recommended dilutions	WB: 1:500-1,000 IHC: 1:100-200 Optimal dilutions should be determined by the end user.

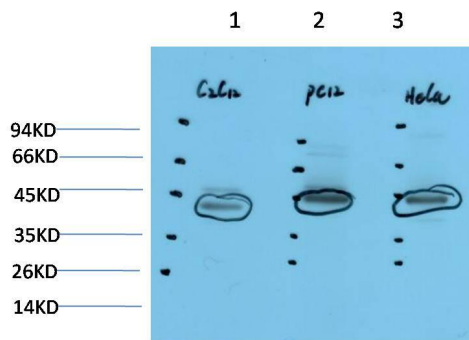
Applications

Formulation	Antigen Affinity Purified IgG in PBS, pH 7.4, containing 0.02% sodium azide as Preservative and 50% Glycerol.
Storage	Store at -20°C. Avoid repeated freeze-thaw cycles.
Concentration	1 mg/ml
Clonality	Polyclonal

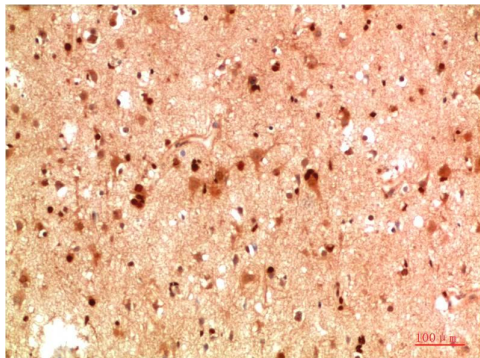
Background

Alternative Names	DNA J B1, HDJ1, HSPF1
Observed band	40
Human Gene ID	3337
Human Swiss-Prot Number	P25685
Background	HSP40 and HSP40-like proteins represent a large family of chaperone proteins that are homologous to E. coli DnaJ protein. HSP40 family proteins bind unfolded proteins, prevent their aggregation, and then deliver them to HSP70. Another major function of HSP40 is to stimulate ATPase activity of HSP70, which causes conformational change of the unfolded proteins.

Selected Validation Data



Western blot analysis of 1) C2C12 Cell Lysate, 2) PC12 Cell Lysate, 3) HeLa Cell Lysate using HSP40 Rabbit pAb diluted at 1:1000.



Immunohistochemical analysis of paraffin-embedded Human Brain Tissue using HSP40 Rabbit pAb diluted at 1:200