

ATG13 Rabbit Polyclonal Antibody (F311)

Catalog No: RA20299

Basic Information

Host species	Rabbit
Applications	IHC
Species Cross-Reactivity	H, R, M
Specificity	The Antibody can detect endogenous ATG13 proteins.
Recommended dilutions	IHC: 1:100-200 Optimal dilutions should be determined by the end user.

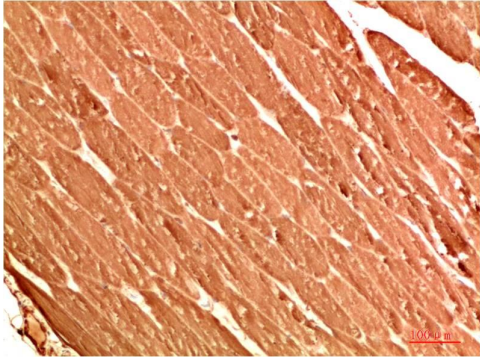
Applications

Formulation	Antigen Affinity Purified IgG in PBS, pH 7.4, containing 0.02% sodium azide as Preservative and 50% Glycerol.
Storage	Store at -20°C. Avoid repeated freeze-thaw cycles.
Concentration	1 mg/ml
Clonality	Polyclonal

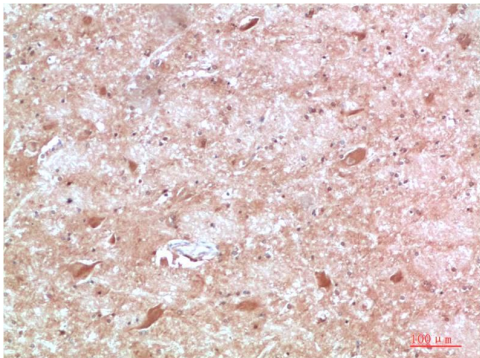
Background

Alternative Names	KIAA0652, Apg13, Autophagy-related protein 13 antibody
Observed band	57
Human Gene ID	9776
Human Swiss-Prot Number	O75143
Background	Atg13 was identified as a constitutively expressed protein that was genetically linked to Atg1/Apg1, a protein kinase required for autophagy. Overexpression of Atg1 suppresses the defects in autophagy observed in Atg13 mutants. Autophagy requires a direct association between Atg1 and Atg13, and is inhibited by TOR-dependent phosphorylation of Atg13 under high-nutrient conditions.

Selected Validation Data



Immunohistochemical analysis of paraffin-embedded Human Skeletal Muscle Tissue using ATG13 Rabbit pAb diluted at 1:200.



Immunohistochemical analysis of paraffin-embedded Human Brain Tissue using ATG13 Rabbit pAb diluted at 1:200.