

# NBR1 Rabbit Polyclonal Antibody (F317)

## Catalog No: RA20302

### Basic Information

Host species	Rabbit
Applications	IHC
Species Cross-Reactivity	H, R, M
Specificity	The Antibody can detects endogenous NBR1 proteins.
Recommended dilutions	IHC: 1:200-500 Optimal dilutions should be determined by the end user.

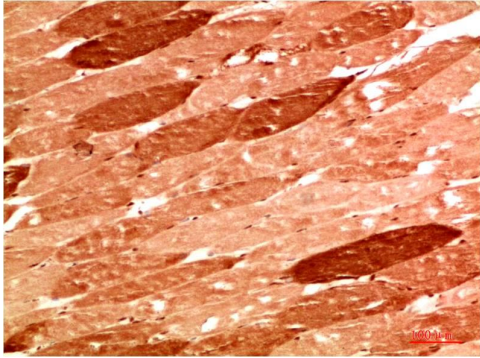
### Applications

Formulation	Antigen Affinity Purified IgG in PBS, pH 7.4, containing 0.02% sodium azide as Preservative and 50% Glycerol.
Storage	Store at -20°C. Avoid repeated freeze-thaw cycles.
Concentration	1 mg/ml
Clonality	Polyclonal

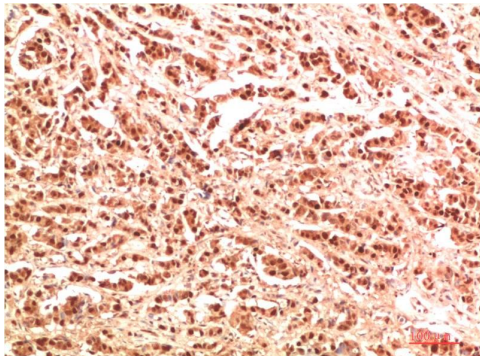
### Background

Alternative Names	1A13B, MIG19, Nbr1
Observed band	120
Human Gene ID	4077
Human Swiss-Prot Number	Q14596
Background	NBR1 protein is known for its encoding gene proximity to the BRCA1 tumor suppressor gene. N-terminal Phox and Bem1p (PB1) domains of NBR1 mediate its interaction with muscle specific titin kinase and scaffolding protein p62. NBR1 plays a role in autophagy by facilitating the autophagosomal degradation of ubiquitinated proteins independently and also in concert with p62.

Selected Validation Data



Immunohistochemical analysis of paraffin-embedded Human Skeletal Muscle Tissue using NBR1 Rabbit pAb diluted at 1:500.



Immunohistochemical analysis of paraffin-embedded Human Breast Carcinoma Tissue using NBR1 Rabbit pAb diluted at 1:500.