

# WIPI2 Rabbit Polyclonal Antibody (F327)

## Catalog No: RA20304

### Basic Information

Host species	Rabbit
Applications	IHC
Species Cross-Reactivity	H, R, M
Specificity	The Antibody can detect endogenous WIPI2 proteins.
Recommended dilutions	IHC: 1:100-200 Optimal dilutions should be determined by the end user.

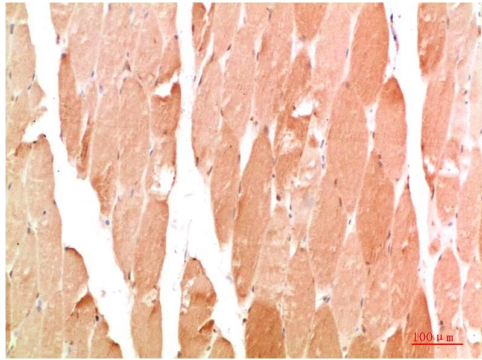
### Applications

Formulation	Antigen Affinity Purified IgG in PBS, pH 7.4, containing 0.02% sodium azide as Preservative and 50% Glycerol.
Storage	Store at -20°C. Avoid repeated freeze-thaw cycles.
Concentration	1 mg/ml
Clonality	Polyclonal

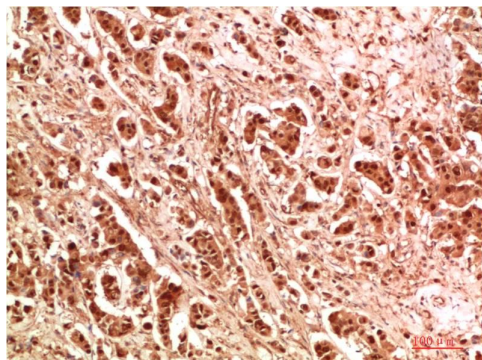
### Background

Alternative Names	ATG21, CGI50
Observed band	49
Human Gene ID	26100
Human Swiss-Prot Number	Q9Y4P8
Background	WIPI2 is the mammalian homolog of Atg18, not Atg21, along with the closely related protein, WIPI1. WD40 repeat proteins regulate the assembly of multiprotein complexes by presenting a beta-propeller platform for simultaneous and reversible protein-protein interactions. Members of the WIPI subfamily of WD40 repeat proteins, such as WIPI2, have a 7-bladed propeller structure and contain a conserved motif for interaction with phospholipids.

## Selected Validation Data



Immunohistochemical analysis of paraffin-embedded Human Skeletal Muscle Tissue using WIPI2 Rabbit pAb diluted at 1:200.



Immunohistochemical analysis of paraffin-embedded Human Breast Carcinoma Tissue using WIPI2 Rabbit pAb diluted at 1:200.