

ERK1 Rabbit Polyclonal Antibody (ERK1)

Catalog No: RA20314

Basic Information

Host species	Rabbit
Applications	IHC
Species Cross-Reactivity	H, R, M
Specificity	The Antibody can detect endogenous P44 MAPK(ERK1) proteins.
Recommended dilutions	IHC: 1:200-500 Optimal dilutions should be determined by the end user.

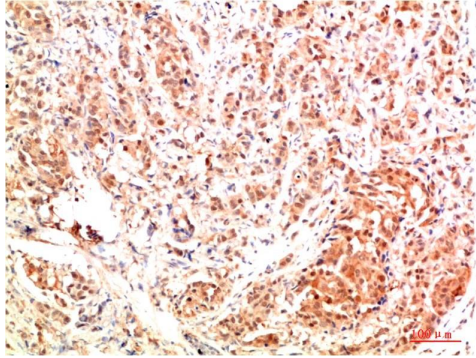
Applications

Formulation	Antigen Affinity Purified IgG in PBS, pH 7.4, containing 0.02% sodium azide as Preservative and 50% Glycerol.
Storage	Store at -20°C. Avoid repeated freeze-thaw cycles.
Concentration	1 mg/ml
Clonality	Polyclonal

Background

Alternative Names	MAPK, Mitogen-activated protein Kinase, PRKM2, MK01
Observed band	44
Human Gene ID	5594
Human Swiss-Prot Number	P27361
Background	Mitogen-activated protein kinases (MAPKs) are a widely conserved family of serine/threonine protein kinases involved in many cellular programs such as cell proliferation, differentiation, motility, and death. The p44/42 MAPK (Erk1/2) signaling pathway can be activated in response to a diverse range of extracellular stimuli including mitogens, growth factors, and cytokines and is an important target in the diagnosis and treatment of cancer.

Selected Validation Data



Immunohistochemical analysis of paraffin-embedded Human Breast Carcinoma Tissue using ERK1 Rabbit pAb diluted at 1:500