

AMH Rabbit Polyclonal Antibody

Catalog No: RA20318

Basic Information

Host species	Rabbit
Applications	IHC
Species Cross-Reactivity	H
Specificity	The Antibody can detects endogenous AMH protein.
Recommended dilutions	IHC: 1:100-200 Optimal dilutions should be determined by the end user.

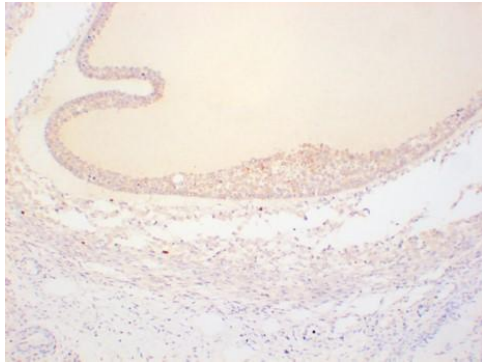
Applications

Formulation	Antigen Affinity Purified IgG in PBS, pH 7.4, containing 0.02% sodium azide as Preservative and 50% Glycerol.
Storage	Store at -20°C. Avoid repeated freeze-thaw cycles.
Concentration	1 mg/ml
Clonality	Polyclonal

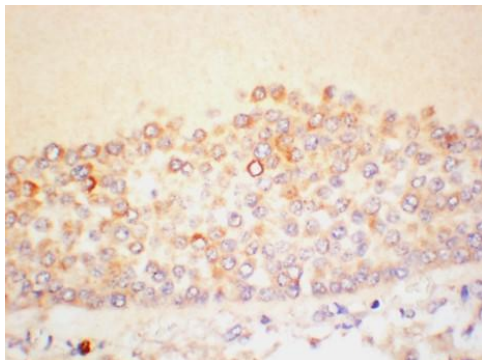
Background

Alternative Names	AMH, MIF,MIS, anti muellerian hormone,muellerian-inhibitine substance
Observed band	61
Human Gene ID	268
Human Swiss-Prot Number	P03971
Background	anti-Mullerian hormone(AMH) Homo sapiens This gene encodes a secreted ligand of the TGF-beta (transforming growth factor-beta) superfamily of proteins. Ligands of this family bind various TGF-beta receptors leading to recruitment and activation of SMAD family transcription factors that regulate gene expression.

Selected Validation Data



Immunohistochemical analysis of paraffin-embedded Human Ovarian Tissue using AMH Rabbit Polyclonal antibody diluted at 1:200.



Immunohistochemical analysis of paraffin-embedded Human Ovarian Tissue using AMH Rabbit Polyclonal antibody diluted at 1:200.