

STIP1/HOP Rabbit Polyclonal Antibody

Catalog No: RA20343

Basic Information

Host species	Rabbit
Applications	WB
Species Cross-Reactivity	H, R, M
Specificity	Antibody can detects Human endogenous STIP1/HOP proteins.
Recommended dilutions	WB: 1:2,000-5,000 Optimal dilutions should be determined by the end user.

Applications

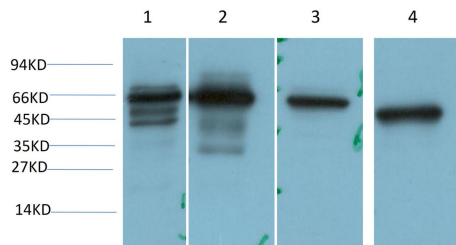
Formulation	PBS, pH 7.4, containing 0.02% sodium azide as Preservative and 50% Glycerol.
Storage	Store at -20°C. Avoid repeated freeze-thaw cycles.
Concentration	1 mg/ml
Clonality	Polyclonal

Background

Alternative Names	Hop, HSC70/HSP90 organizing protein, p60, HELS 94n, STI1, STIP1, Stress induced phosphoprotein 1
Observed band	~64
Human Gene ID	10963
Human Swiss-Prot Number	P31948

Stress induced phosphoprotein 1 (STIP1) Homo sapiens STIP1 is an adaptor protein that coordinates the functions of HSP70 (see HSPA1A; MIM 140550) and HSP90 (see HSP90AA1; MIM 140571) in protein folding. It is thought to assist in the transfer of proteins from HSP70 to HSP90 by binding both HSP90 and substrate-bound HSP70. STIP1 also stimulates the ATPase activity of HSP70 and inhibits the ATPase activity of HSP90, suggesting that it regulates both the conformations and ATPase cycles of these chaperones.

Selected Validation Data



Western blot analysis of 1)Hela Cell, 2) 293T Cell, 3)Mouse Brain Tissue, 4) Rat Brain Tissue Lysate using STIP1/HOP Rabbit polyclonal Antibody diluted at 1:2,000.