

Alliinase Rabbit Polyclonal Antibody

Catalog No: RA20404

Basic Information

Host species	Rabbit
Applications	WB
Species Cross-Reactivity	Allium sativum L
Specificity	Alliinase Rabbit Polyclonal antibody detects endogenous and recombinant Alliinase proteins.
Recommended dilutions	WB: 1:3,000 Optimal dilutions should be determined by the end user.

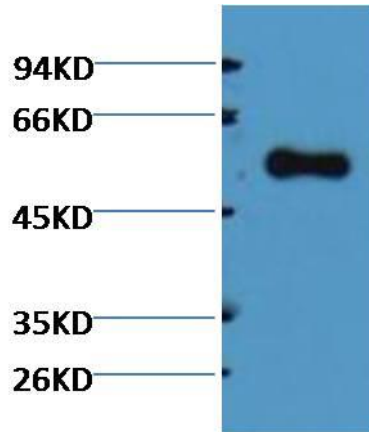
Applications

Formulation	PBS, pH 7.4, containing 0.02% sodium azide as Preservative and 50% Glycerol.
Storage	Store at -20°C. Avoid repeated freeze-thaw cycles.
Concentration	1 mg/ml
Clonality	Polyclonal

Background

Alternative Names	
Observed band	50
Human Gene ID	
Human Swiss-Prot Number	N/A
Background	Alliinase is responsible for catalyzing chemical reactions that produce the volatile chemicals that give these foods their flavors, odors, and tear-inducing properties. Alliinases are part of the plant's defense against herbivores. Alliinase is normally sequestered within a plant cell, but, when the plant is damaged by a feeding animal, the alliinase is released to catalyze the production of the pungent chemicals.

Selected Validation Data



Western blot analysis of purified alliinase with alliinase Rabbit Polyclonal antibody diluted at 1:5,000.