

# $\beta$ -Tubulin Mouse Monoclonal Antibody(5G3)

## Catalog No: RCA22

### Basic Information

Host species	Mouse
Applications	WB, IHC, IF
Species Cross-Reactivity	H, R, M, Mk, Dg, C, Hm, Rb, Sh Insect, Yeast
Specificity	Antibody can detects endogenous $\beta$ -tubulin protein.
Recommended dilutions	WB: 1:5,000      IHC: 1:200      IF: 1:100-200 Optimal dilutions should be determined by the end user.

### Applications

Formulation	PBS, pH 7.4, containing 0.02% sodium azide as Preservative and 50% Glycerol.
Storage	Store at -20°C. Avoid repeated freeze-thaw cycles.
Concentration	1 mg/ml
Clonality	Monoclonal

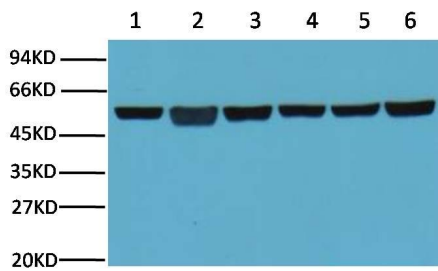
### Background

Alternative Names	
Observed band	55
Human Gene ID	203068
Human Swiss-Prot Number	P07437

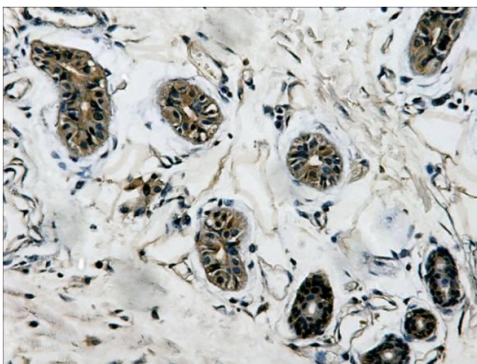
#### Background

Microtubules are constituent parts of the mitotic apparatus, cilia, flagella, and elements of the cytoskeleton. They consist principally of 2 soluble proteins, alpha- and beta-tubulin, each of about 55,000 Da. Antibodies against beta Tubulin are useful as loading controls for Western Blotting. However it should be noted that levels of  $\beta$ -Tubulin may not be stable in certain cells. For example, expression of  $\beta$ -Tubulin in adipose tissue is very low and therefore  $\beta$ -Tubulin should not be used as loading control for these tissues.

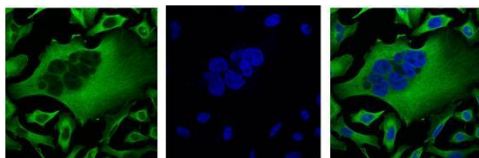
## Selected Validation Data



Western blot analysis of A549 (1) , Rat brain (2) , Mouse brain (3) , Chicken lung (4) and Rabbit testis (5), Sheep muscle (6) with  $\beta$ -tubulin mouse mAb(5G3) diluted at 1:5000.



IHC Staining of Human colon tissue with  $\beta$ -tubulin mouse mAb(5G3) diluted at 1:200.



IF analysis of HeLa with  $\beta$ -tubulin mouse mAb(Left) and DAPI (Right) diluted at 1:100.