

# GAPDH Mouse Monoclonal Antibody(2B8)-HRP conjugated

## Catalog No: RCA30

### Basic Information

Host species	Mouse
Applications	WB, IHC
Species Cross-Reactivity	H, R, M, Mk, Dg, Ch, Hm, Rb, Pg, Sh
Specificity	The GAPDH antibody can detects endogenous GAPDH protein.
Recommended dilutions	WB: 1:5,000                      IHC:1:100 Optimal dilutions should be determined by the end user.

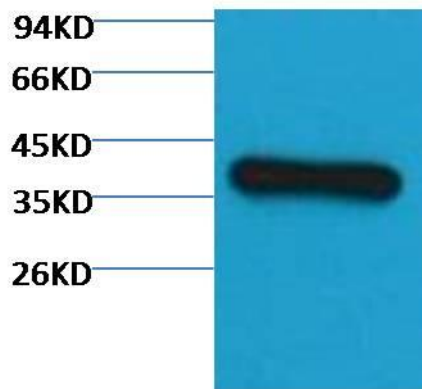
### Applications

Formulation	PBS, pH 7.4, 50% Glycerol. Avoid SODIUM AZIDE.
Storage	Store at -20°C. Avoid repeated freeze-thaw cycles.
Concentration	1 mg/ml
Clonality	Monoclonal

### Background

Alternative Names	G3PD, G3PDH, GAPD, Glyceraldehyde 3 phosphate dehydrogenase, MGC102544
Observed band	37
Human Gene ID	2597
Human Swiss-Prot Number	P04406
Background	Glyceraldehyde 3 phosphate dehydrogenase (GAPDH) is well known as one of the key enzymes involved in glycolysis. GAPDH is constitutively expressed in almost all tissues at high levels, therefore antibodies against GAPDH are useful as loading controls for Western Blotting. Some physiological factors, such as hypoxia and diabetes, increase GAPDH expression in certain cell types.

Selected Validation Data



Western blot analysis of HeLa with GAPDH Mouse Monoclonal  
Antibody(2B8)-HRP conjugated diluted at 1:3,000