

PCNA Mouse Monoclonal Antibody(7D1)

Catalog No: RCA31

Basic Information

Host species	Mouse
Applications	WB, IHC
Species Cross-Reactivity	H, M, R
Specificity	The antibody detects endogenous PCNA proteins.
Recommended dilutions	WB 1:500-2,000 IHC: 1:100~200 Optimal dilutions should be determined by the end user.

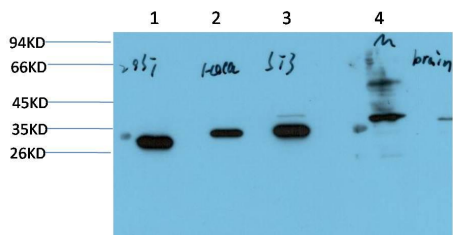
Applications

Formulation	PBS, pH 7.4, containing 0.02% sodium azide as Preservative and 50% Glycerol.
Storage	Store at -20°C. Avoid repeated freeze-thaw cycles.
Concentration	1 mg/ml
Clonality	Monoclonal

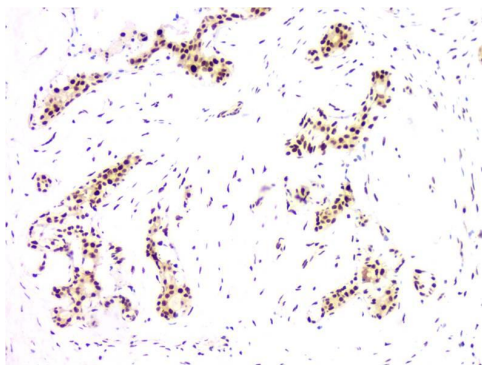
Background

Alternative Names	Proliferating cell nuclear antigen
Observed band	29
Human Gene ID	5111
Human Swiss-Prot Number	P12004
Background	PCNA is a marker for cells in early G1 phase and S phase of the cell cycle. It is found in the nucleus and is a cofactor of DNA polymerase delta. PCNA acts as a homotrimer and helps increase the processivity of leading strand synthesis during DNA replication. In response to DNA damage, PCNA is ubiquitinated and is involved in the RAD6 dependent DNA repair pathway. Two transcript variants encoding the same protein have been found for PCNA. Pseudogenes of this gene have been described on chromosome 4 and on the X chromosome.

Selected Validation Data



Western blot analysis of 1) 293T Cell Lysate, 2) HeLa Cell Lysate, 3) 3T3 Cell Lysate, 4) Mouse Brain Tissue Lysate using PCNA Mouse mAb diluted at 1:5000.



Immunohistochemical analysis of paraffin-embedded Human Breast Carcinoma Tissue using PCNA Mouse mAb diluted at 1:200.