

Drosophila Melanogaster GAPDH Mouse Monoclonal Antibody(7B7)

Catalog No: RCA32

Basic Information

Host species	Mouse
Applications	WB
Species Cross-Reactivity	Drosophila Melanogaster (H, M, R)
Specificity	Antibody can detects endogenous Drosophila Melanogaster GAPDH protein , predict Cross-Reactivity with Human, Mouse, Rat.
Recommended dilutions	WB:1:5,000-10,000 Optimal dilutions should be determined by the end user.

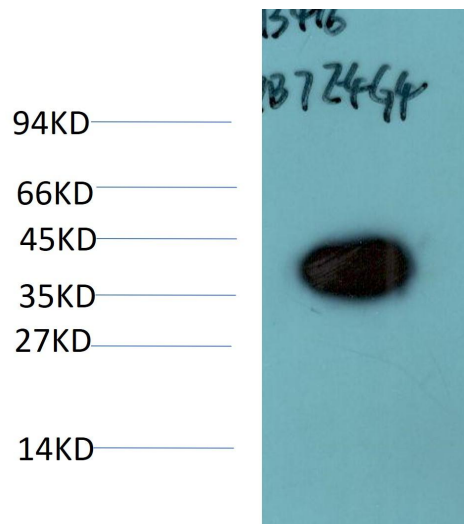
Applications

Formulation	Antigen Affinity Purified IgG in PBS, pH 7.4, containing 0.02% sodium azide as Preservative and 50% Glycerol.
Storage	Store at -20°C. Avoid repeated freeze-thaw cycles.
Concentration	1 mg/ml
Clonality	Monoclonal

Background

Alternative Names	G3PDH antibody, BARS-38 antibody, Glyceraldehyde 3 phosphate dehydrogenase antibody
Observed band	38K
Human Gene ID	35728
Human Swiss-Prot Number	P07486
Background	Glyceraldehyde 3 phosphate dehydrogenase (GAPDH) is well known as one of the key enzymes involved in glycolysis. GAPDH is constitutively expressed in almost all tissues at high levels, therefore antibodies against GAPDH are useful as loading controls for Western Blotting. Some physiological factors, such as hypoxia and diabetes, increase GAPDH expression in certain cell types.

Selected Validation Data



Western blot analysis of Drosophila Melanogaster Whole Body Lysate using Drosophila Melanogaster GAPDH Mouse Monoclonal Antibody(7B7) diluted at 1:5,000.