

# $\beta$ -actin Mouse Monoclonal Antibody(M5)

## Catalog No: RCA37

### Basic Information

Host species	Mouse
Applications	WB
Species Cross-Reactivity	H, R, M, Mk, Dg
Specificity	Antibody can detects endogenous $\beta$ -actin protein.
Recommended dilutions	WB: 1:5,000-10,000 Optimal dilutions should be determined by the end user.

### Applications

Formulation	PBS, pH 7.4, containing 0.02% sodium azide as Preservative and 50% Glycerol.
Storage	Store at -20°C. Avoid repeated freeze-thaw cycles.
Concentration	1 mg/ml
Clonality	Monoclonal

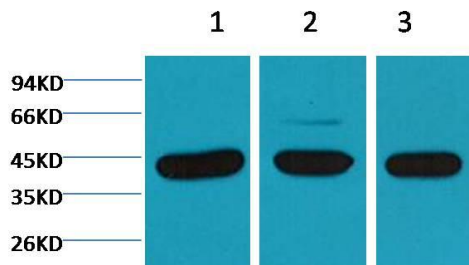
### Background

Alternative Names	actin antibody, b-actin antibody, beta-actin antibody
Observed band	43
Human Gene ID	60
Human Swiss-Prot Number	P60709

### Background

$\beta$ -actin is one of six different actin isoforms that have been identified. The actin molecules found in cells of various species and tissues tend to be very similar in their immunological and physical properties. Therefore, antibodies against  $\beta$ -actin are useful as loading controls for Western Blotting. However it should be noted that levels of  $\beta$ -actin may not be stable in certain cells. For example, expression of  $\beta$ -actin in adipose tissue is very low and therefore  $\beta$ -actin should not be used as loading control for these tissues.

Selected Validation Data



Western blot analysis of 1) Hela, 2) Mouse Brain tissue, 3) Rat Brain tissue with  $\beta$ -actin Mouse Monoclonal Antibody(M5) diluted at 1:5,000.