

Bovine Serum Albumin Mouse Monoclonal Antibody(Mix-mA)

Catalog No: RCA45

Basic Information

| | |
|--------------------------|--|
| Host species | Mouse |
| Applications | WB, ELISA |
| Species Cross-Reactivity | Cow |
| Specificity | The Bovine Serum Albumin antibody can detects endogenous BSA protein. |
| Recommended dilutions | WB: 1:1,000-2,000 Optimal dilutions should be determined by the end user. |

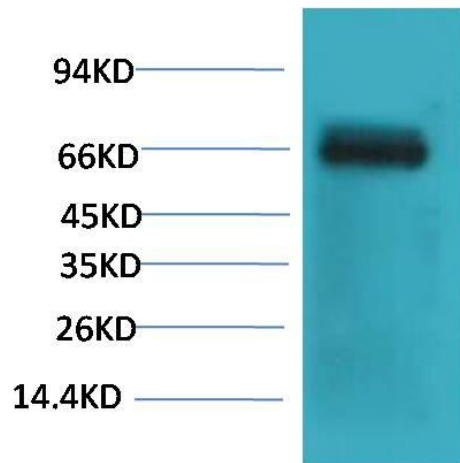
Applications

| | |
|---------------|--|
| Formulation | PBS, pH 7.4, containing 0.02% sodium azide as Preservative and 50% Glycerol. |
| Storage | Store at -20°C. Avoid repeated freeze-thaw cycles. |
| Concentration | 1 mg/ml |
| Clonality | Monoclonal |

Background

| | |
|-------------------------|--|
| Alternative Names | BSA antibody, ALB antibody, Albumin antibody, HSA antibody, PRO0883 antibody, Serum Albumin antibody |
| Observed band | 66 |
| Human Gene ID | |
| Human Swiss-Prot Number | N/A |
| Background | Bovine serum albumin (also known as BSA or "Fraction V") is a serum albumin protein derived from cows. It is often used as a protein concentration standard in lab experiments. Albumin is a soluble, monomeric protein which comprises about one-half of the blood serum protein. |

Selected Validation Data



Western blot analysis of Bovine Serum Albumin with Bovine Serum Albumin Mouse mAb diluted at 1:2,000.