

Lamin B1 Rabbit Polyclonal Antibody

Catalog No: RCA48

Basic Information

Host species	Rabbit
Applications	WB, IHC
Species Cross-Reactivity	H, R, M
Specificity	The Lamin B1 antibody can detect endogenous Lamin B1 protein.
Recommended dilutions	WB: 1:1,000-3,000 IHC: 1:500-1,000 Optimal dilutions should be determined by the end user.

Applications

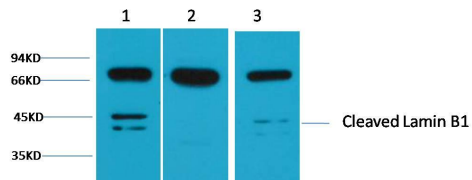
Formulation	PBS, pH 7.4, containing 0.02% sodium azide as Preservative and 50% Glycerol.
Storage	Store at -20°C. Avoid repeated freeze-thaw cycles.
Concentration	1 mg/ml
Clonality	Polyclonal

Background

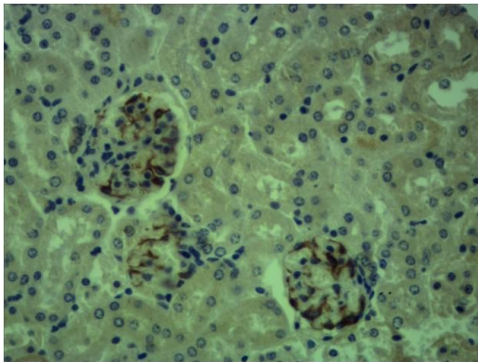
Alternative Names	ADLD, LMB1, LMNB1, MGC111419, OTTHUMP00000159218
Observed band	
Human Gene ID	4001
Human Swiss-Prot Number	P20700

The nuclear lamina consists of a two-dimensional matrix of proteins located next to the inner nuclear membrane. The lamin family of proteins make up the matrix and are highly conserved in evolution. During mitosis, the lamina matrix is reversibly disassembled as the lamin proteins are phosphorylated. Lamin proteins are thought to be involved in nuclear stability, chromatin structure and gene expression. Vertebrate lamins consist of two types, A and B. This gene encodes one of the two B type proteins, B1.

Selected Validation Data



Western blot analysis of 1) 293T, 2) Mouse Brain, 3) Rat Brain tissue with Lamin B1 Rabbit Polyclonal Antibody diluted at 1:2,000.



Immunohistochemical analysis of paraffin-embedded Mouse Kidney Tissue using Lamin B1 Rabbit pAb diluted at 1:500.