

β Tubulin Rabbit Polyclonal Antibody

Catalog No: RCA53

Basic Information

Host species	Rabbit
Applications	WB, IHC
Species Cross-Reactivity	H, R, M
Specificity	The β tubulin Rabbit Polyclonal Antibody can detect endogenous β tubulin protein.
Recommended dilutions	WB: 1:2,000-5,000 IHC: 1:500-1,000 Optimal dilutions should be determined by the end user.

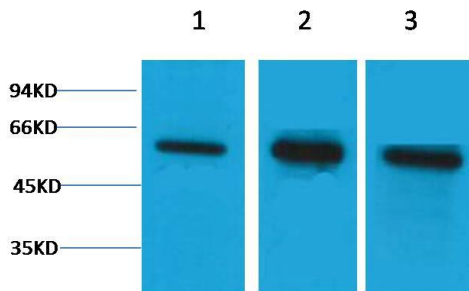
Applications

Formulation	PBS, pH 7.4, containing 0.02% sodium azide as Preservative and 50% Glycerol.
Storage	Store at -20°C. Avoid repeated freeze-thaw cycles.
Concentration	1 mg/ml
Clonality	Polyclonal

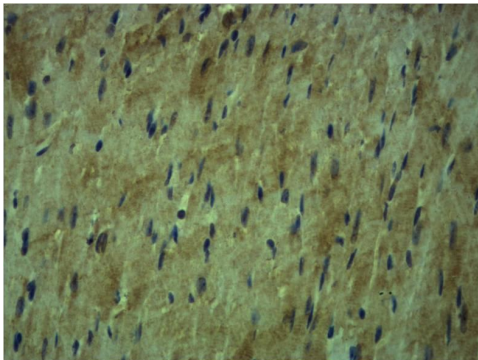
Background

Alternative Names	Beta 4 tubulin, TBB5, TUBB2, TUBB2A, tubulin beta 2A, beta tubulin, tubulin beta chain
Observed band	55
Human Gene ID	203068
Human Swiss-Prot Number	P07437
Background	Microtubules are constituent parts of the mitotic apparatus, cilia, flagella, and elements of the cytoskeleton. They consist principally of 2 soluble proteins, alpha- and beta-tubulin, each of about 55,000 Da. Antibodies against beta Tubulin are useful as loading controls for Western Blotting. However it should be noted that levels of β-Tubulin may not be stable in certain cells. For example, expression of β-Tubulin in adipose tissue is very low and therefore β-Tubulin should not be used as loading control for these tissues.

Selected Validation Data



Western blot analysis of 1) HeLa, 2) Mouse Brain, 3) Rat Brain tissue with β -tubulin Rabbit pAb diluted at 1:5,000.



Immunohistochemical analysis of paraffin-embedded Mouse Heart Tissue using β -tubulin Rabbit pAb diluted at 1:500.