

# Transferrin Rabbit Polyclonal Antibody

## Catalog No: RCA55

### Basic Information

Host species	Rabbit
Applications	WB, IHC
Species Cross-Reactivity	H, R, M
Specificity	The Transferrin Mouse Monoclonal Antibody can detects endogenous Human Transferrin protein.
Recommended dilutions	WB: 1:5,000-10,000      IHC: 1:200-500 Optimal dilutions should be determined by the end user.

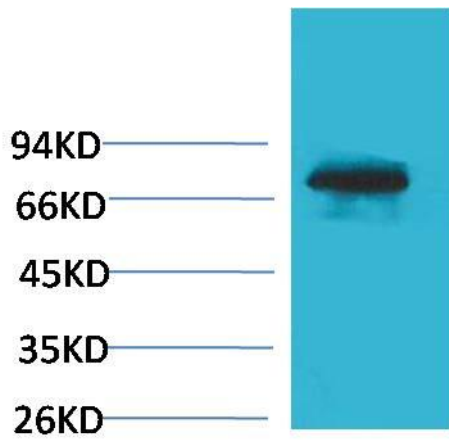
### Applications

Formulation	Antigen Affinity Purified IgG in PBS, pH 7.4, containing 0.02% sodium azide as Preservative and 50% Glycerol.
Storage	Store at -20°C. Avoid repeated freeze-thaw cycles.
Concentration	1 mg/ml
Clonality	Polyclonal

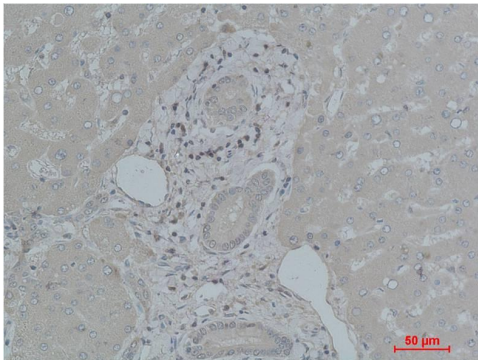
### Background

Alternative Names	Apotransferrin antibody, beta 1 metal binding globulin antibody, serotransferrin antibody, TF antibody
Observed band	77
Human Gene ID	7018
Human Swiss-Prot Number	P02787
Background	Transferrins are iron-binding blood plasma glycoproteins that control the level of free iron in biological fluids. It is responsible for the transport of iron from sites of absorption and heme degradation to those of storage and utilization.

Selected Validation Data



Western blot analysis of Human Blood sample with Transferrin Rabbit pAb diluted at 1:5,000.



Immunohistochemical analysis of paraffin-embedded Human Liver Tissue using Transferrin Rabbit pAb diluted at 1:500.