

GAPDH Rabbit Polyclonal Antibody

Catalog No: RCA59

Basic Information

Host species	Rabbit
Applications	WB, IHC
Species Cross-Reactivity	H, R, M, Mk, Ch, Hm, Sh, Xenopus
Specificity	Antibody can detect endogenous GAPDH protein.
Recommended dilutions	WB: 1:5,000 IHC: 1:200 Optimal dilutions should be determined by the end user.

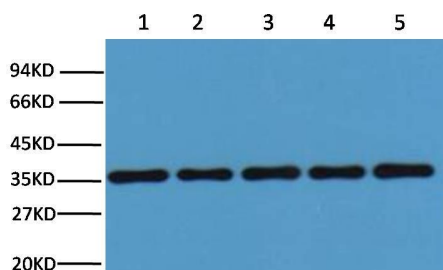
Applications

Formulation	PBS, pH 7.4, containing 0.02% sodium azide as Preservative and 50% Glycerol.
Storage	Store at -20°C. Avoid repeated freeze-thaw cycles.
Concentration	1 mg/ml
Clonality	Polyclonal

Background

Alternative Names	
Observed band	37
Human Gene ID	2597
Human Swiss-Prot Number	P04406
Background	Glyceraldehyde 3 phosphate dehydrogenase (GAPDH) is well known as one of the key enzymes involved in glycolysis. GAPDH is constitutively expressed in almost all tissues at high levels, therefore antibodies against GAPDH are useful as loading controls for Western Blotting. Some physiological factors, such as hypoxia and diabetes, increase GAPDH expression in certain cell types.

Selected Validation Data



Western blot analysis of 293T (1), Rat brain (2), NIH 3T3(3), Sheep Muscle(4),Rabbit testis(5) with GAPDH rabbit polyclonal diluted at 1:20,000.