

# $\alpha$ -tubulin Rabbit Polyclonal Antibody

## Catalog No: RCA60

### Basic Information

Host species	Rabbit
Applications	WB, IHC
Species Cross-Reactivity	H, R, M
Specificity	Antibody can detects endogenous $\alpha$ -tubulin protein.
Recommended dilutions	WB: 1:2,000      IHC: 1:200 Optimal dilutions should be determined by the end user.

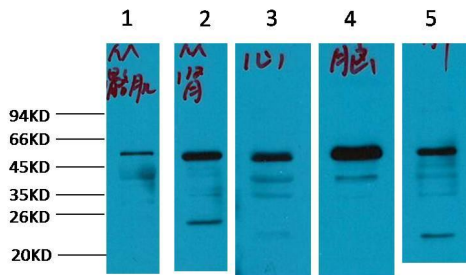
### Applications

Formulation	PBS, pH 7.4, containing 0.02% sodium azide as Preservative and 50% Glycerol.
Storage	Store at -20°C. Avoid repeated freeze-thaw cycles.
Concentration	1 mg/ml
Clonality	Polyclonal

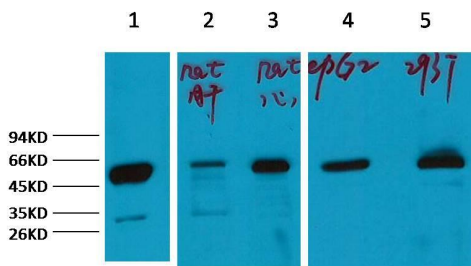
### Background

Alternative Names	
Observed band	52
Human Gene ID	7277
Human Swiss-Prot Number	P68363
Background	Tubulin is one of several members of a small family of globular proteins. The most common members of the tubulin family are $\alpha$ -tubulin and $\beta$ -tubulin, the proteins that make up microtubules. Each has a molecular weight of approximately 55 kiloDaltons. Microtubules are assembled from dimers of $\alpha$ - and $\beta$ -tubulin.

Selected Validation Data



Western blot analysis of 1) Mouse skeletal muscle tissue, 2) Mouse kidney tissue, 3) Mouse Heart Tissue, 4) Mouse brain tissue, 5) Mouse Liver tissue with  $\alpha$ -tubulin Rabbit pAb diluted at 1:2,000.



Western blot analysis of 1) Rat Brain tissue, 2) Rat Liver tissue, 3) Rat Heart Tissue, 4) HepG2, 5) 293T, with  $\alpha$ -tubulin Rabbit pAb diluted at 1:2,000.