

β -actin Rabbit Polyclonal Antibody(A284)

Catalog No: RCA62

Basic Information

Host species	Rabbit
Applications	WB, IHC
Species Cross-Reactivity	H, R, M
Specificity	Antibody can detects endogenous β -actin protein.
Recommended dilutions	WB: 1:2,000-5,000 IHC: 1:100-200 Optimal dilutions should be determined by the end user.

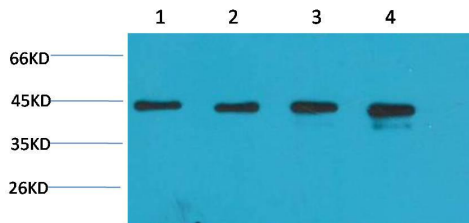
Applications

Formulation	Antigen Affinity Purified IgG in PBS, pH 7.4, containing 0.02% sodium azide as Preservative and 50% Glycerol.
Storage	Store at -20°C. Avoid repeated freeze-thaw cycles.
Concentration	1 mg/ml
Clonality	Polyclonal

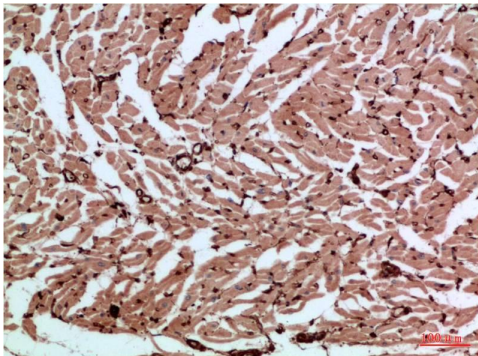
Background

Alternative Names	actin antibody, b-actin antibody, beta-actin antibody
Observed band	43
Human Gene ID	60
Human Swiss-Prot Number	P60709
Background	β -actin is one of six different actin isoforms that have been identified. The actin molecules found in cells of various species and tissues tend to be very similar in their immunological and physical properties. Therefore, antibodies against β -actin are useful as loading controls for Western Blotting. However it should be noted that levels of β -actin may not be stable in certain cells. For example, expression of β -actin in adipose tissue is very low and therefore β -actin should not be used as loading control for these tissues.

Selected Validation Data



Western blot analysis of 1) HeLa Cell Lysate, 2) C2C12 Cell Lysate, 3) PC12 Cell Lysate, 4) Rat Brain Tissue Lysate using β -actin Rabbit pAb diluted at 1:5000.



Immunohistochemical analysis of paraffin-embedded Human Heart Tissue using β -actin Rabbit pAb diluted at 1:200.