

GAPDH Rabbit Polyclonal Antibody (Zebrafish Specific)

Catalog No: RCA63

Basic Information

Host species	Rabbit
Applications	WB, IHC, IF
Species Cross-Reactivity	Zebrafish
Specificity	The GAPDH antibody can detect Zebrafish endogenous GAPDH protein.
Recommended dilutions	WB: 1:5,000 -10,000 IHC: 1:200 IF: 1:200 Optimal dilutions should be determined by the end user.

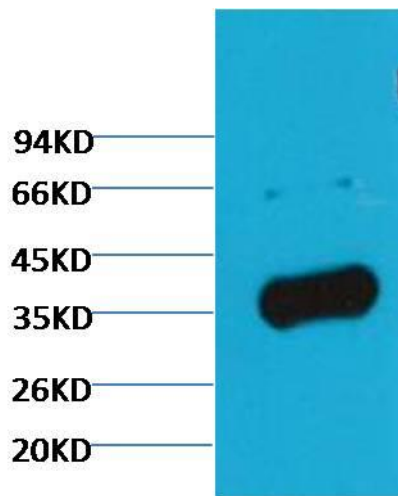
Applications

Formulation	PBS, pH 7.4, containing 0.02% sodium azide as Preservative and 50% Glycerol.
Storage	Store at -20°C. Avoid repeated freeze-thaw cycles.
Concentration	1 mg/ml
Clonality	Polyclonal

Background

Alternative Names	G3PD, G3PDH, GAPD, Glyceraldehyde 3 phosphate dehydrogenase, MGC102544
Observed band	37
Human Gene ID	2597
Human Swiss-Prot Number	P04406
Background	Glyceraldehyde 3 phosphate dehydrogenase (GAPDH) is well known as one of the key enzymes involved in glycolysis. GAPDH is constitutively expressed in almost all tissues at high levels, therefore antibodies against GAPDH are useful as loading controls for Western Blotting. Some physiological factors, such as hypoxia and diabetes, increase GAPDH expression in certain cell types.

Selected Validation Data



Western blot analysis of Zebrafish skeletal muscle with GAPDH
Rabbit pAb(Zebrafish Specific) diluted at 1:5,000.