

C. Elegans β -tubulin Rabbit Polyclonal Antibody

Catalog No: RCA67

Basic Information

Host species	Rabbit
Applications	WB
Species Cross-Reactivity	C. Elegans (H, M, R)
Specificity	Antibody can detect endogenous C. Elegans β -tubulin protein, predict Cross-Reactivity with Human, Mouse, Rat.
Recommended dilutions	WB:1:1,000-2,000 Optimal dilutions should be determined by the end user.

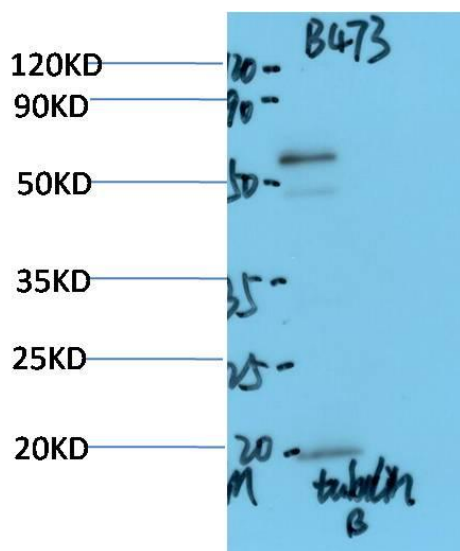
Applications

Formulation	Antigen Affinity Purified IgG in PBS, pH 7.4, containing 0.02% sodium azide as Preservative and 50% Glycerol.
Storage	Store at -20°C. Avoid repeated freeze-thaw cycles.
Concentration	1 mg/ml
Clonality	Polyclonal

Background

Alternative Names	Beta 4 tubulin, TBB5, TUBB2, TUBB2A, tubulin beta 2A, beta tubulin, tubulin beta chain
Observed band	53
Human Gene ID	176501
Human Swiss-Prot Number	O17921
Background	Microtubules are constituent parts of the mitotic apparatus, cilia, flagella, and elements of the cytoskeleton. They consist principally of 2 soluble proteins, alpha- and beta-tubulin, each of about 55,000 Da. Antibodies against beta Tubulin are useful as loading controls for Western Blotting. However it should be noted that levels of β -Tubulin may not be stable in certain cells. For example, expression of β -Tubulin in adipose tissue is very low and therefore β -Tubulin should not be used as loading control for these tissues.

Selected Validation Data



Western blot analysis of C.Elegans whole body Lysate using
(RCA67) Rabbit pAb diluted at 1:4,000.